



# Asset-Trade

Assessment & Sale of Used Assets

Ref. No.: 1411-03181230



## Overview and Technical Data:

**WINDSOR W1000 Injection moulding Machine**  
**1000 Ton**

**WINDSOR**

**WINDSOR**  
TECHNOLOGIES

Year of Build: Jan 1985



## Description:

### Used Klöckner Windsor W1000 -86 injection moulding machine for sale

CNC Controls Siemens S5 150U

Wittmann Handling

Technical data:

- Clamping unit
  - Clamping force: 10000 kN
  - Opening stroke: 1488 mm
  - Distance between bars: 1190x1190 mm
  - Mould height min: 500 mm
  - Mould height max: 4054 g
- Injection Unit
  - Screw diameter: >115 mm
  - Stroke Volumn: 4770 CM<sup>3</sup>
  - Injection pressure: 1800 bar
- Weights:
  - Clamping unit: 63 tons
  - injection unit: 27tons
  - Total: 90 tons
- Dimentions: 12,5 x 3 x 3,5m

This Windsor W1000 Injection Moulding Machine was manufactured in 1985 in Germany. This machine can operate with a clamping force of 10000 kN and an injection pressure of 1800 bar. Must be noted that there is a complete, functioning card set including installation frame of the same machine.



## Technical Data:

### Technical Data:

Control: SIEMENS

### Buyer Information:

Condition: Normal wear

Available: Immediately

Sold as:

EXW (Ex Works - Incoterm)

VAT: 19 %

Buyers Premium: 18 %

Location: Germany

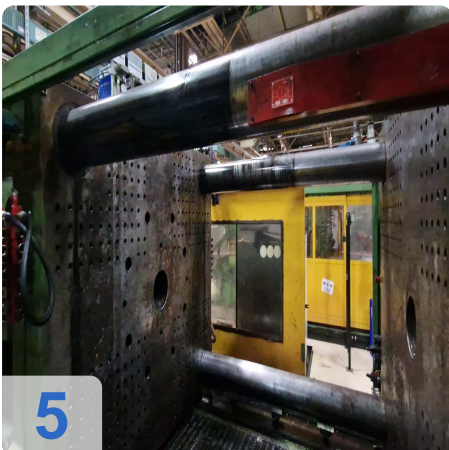
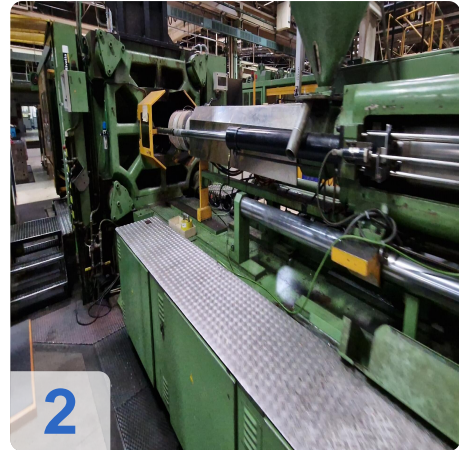
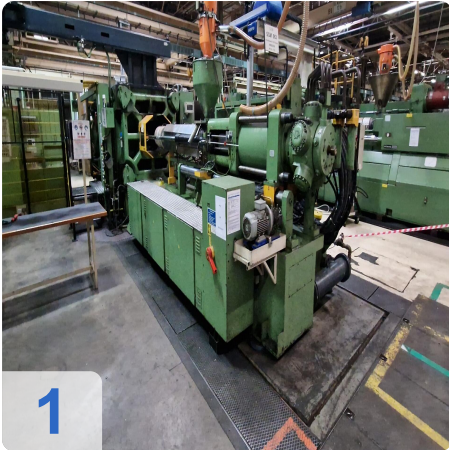




# Asset-Trade

Assessment & Sale of Used Assets

## Images:

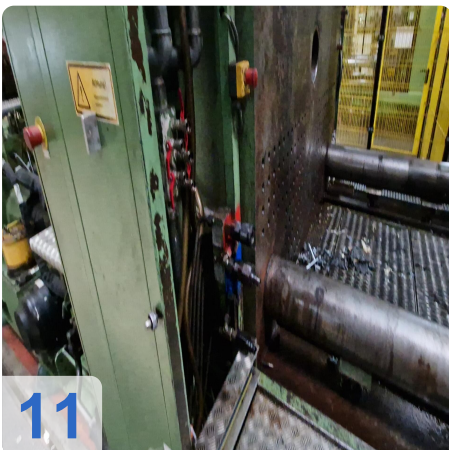
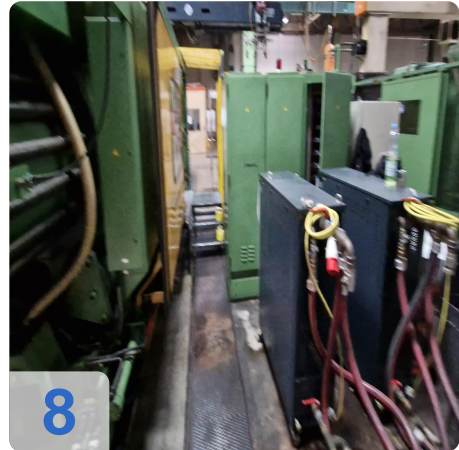




Asset-Trade

e

Assets



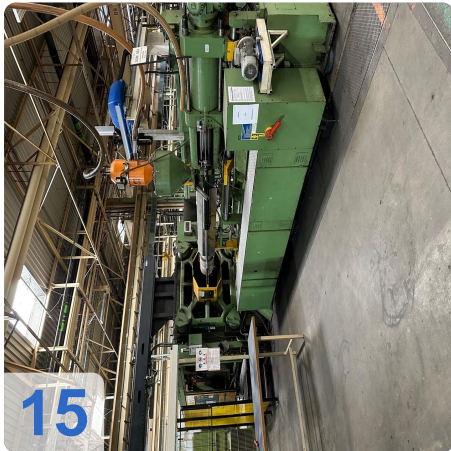




Asset-Trade

e

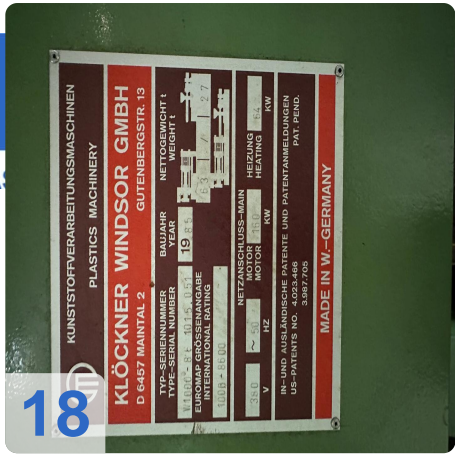
Assets





Asset-Trade

18



e  
Assets



# Asset-Trade

Assessment & Sale of Used Assets

QR Code for <https://www.asset-trade.de/en/print/pdf/node/7377>

**Asset-Trade**

**Assessment and Sale of Used Assets world  
wide**

**Am Sonnenhof 16**

**47800 Krefeld**

**Germany**

**Tel.: +49 2151 32500 33**