



# Asset-Trade

Assessment & Sale of Used Assets

Ref. No.: 1426-06291612

## Overview and Technical Data:

**SCHNEEBERGER Gemini DMR - AWL 5-Axis  
CNC tool grinder**

**GEMINI**

**SCHNEEBERGER**

**SCHNEEBERGER**

**SCHNEEBERGER**

Year of Build: Jan 2008



## Description:

### Used SCHNEEBERGER Gemini DMR - AWL

### 5 axes CNC tool grinding machine

CNC control Fanuc 160i MB

#### Technical data

- Travels - Glass scales X, Y, Z
  - X-axis 400 mm / 20'000 mm/min
  - Y-axis 300 mm / 5'000 mm/min
  - Z-axis 280mm / 20'000 mm/min
  - Resolution X/Y/Z : 0,0001 mm
- Centre height: 210 mm
- Spindle:
  - Spindle speed: 10000 Rpm
  - Drive power 15KW
  - Grinding wheel holder: HSK 50
  - Wheel diameter up to: 50-250 mm
  - Grinding wheel changer 8 pieces
  - Grinding wheel button
- Other
  - CO2 fire extinguishing system
  - 3D tracer
  - Hydr. voltage ISO 50
  - Network connection
  - Interface to Zoller measuring devices
- Grinding software Standard-WZ
  - Kennermetal-Hertel SE,TX,TF,Unidrill B9XX
  - Sandvik
  - Profile tools
  - Woodworking tools
  - 3D simulation

---

The SCHNEEBERGER GEMINI DMR is a high-performance 5-axis CNC grinding machine with high performance and autonomy for the serial production of end mills, drills, profile



tools, profile grinding of pinion cutters and hob peeling cutters, as well as production grinding tasks such as profile grinding and flat grinding.

The gemini is the 5-axis CNC grinding machine for the serial production of cutting tools. Complete processing around OD and face, up to 300 mm cutting length, diameter up to 300 mm, maximum workpiece length that can be clamped 400 mm.

Cutting tools such as end mills, ball nose cutters for mold making, high-performance drills, reamers and profile end mills are all part of the standard requirement.

There are specific software packages, grinding processes and clamping systems for the production of shaper cutters with highly dynamic segmented hob grinding, the regrinding of gear cutting tools, end mills, shaper cutters and bevel gear cutters.

CNC grinding of knives for the paper, foodstuffs and plastics industries, profile grinding, cylindrical grinding and surface grinding.



## Technical Data:

### Technical Data:

Control: Series 16i

### Dimensions and Weight:

Height: 220 mm

Length: 3.000 mm

Width: 2.500 mm

Weight: 8.000 kg

### Buyer Information:

Condition: Very good condition

Available: Sold

Sold as:

EXW (Ex Works - Incoterm)

VAT: 19 %

Buyers Premium: 18 %

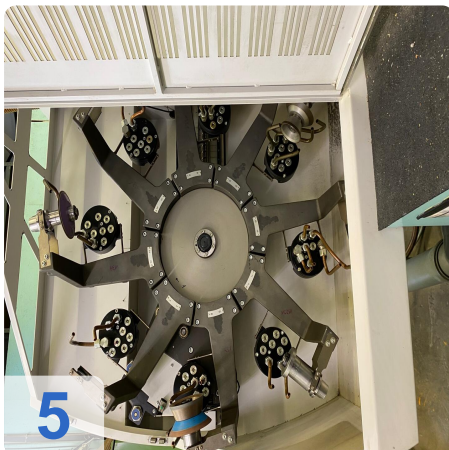
Location: Germany



# Asset-Trade

Assessment & Sale of Used Assets

## Images:



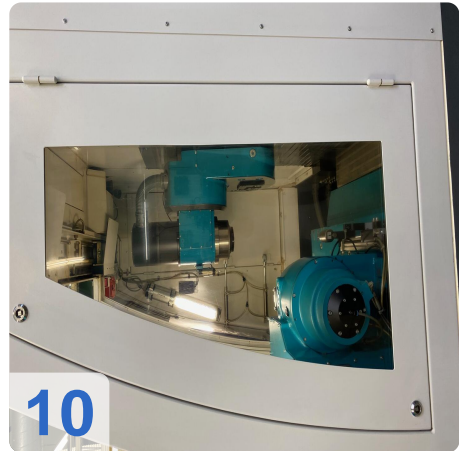
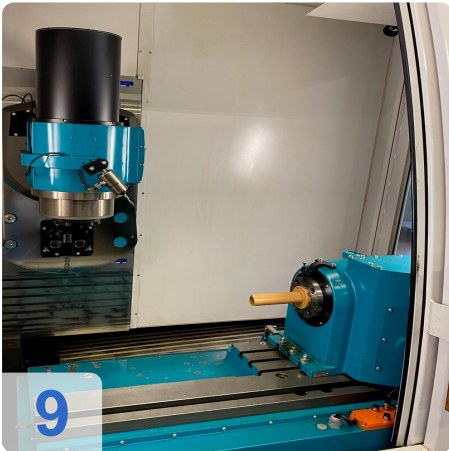




Asset-Trade

e

Assets

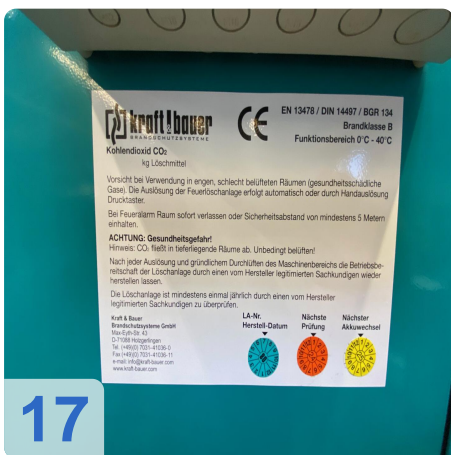
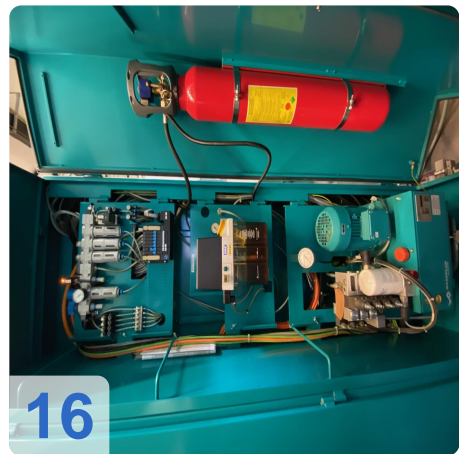
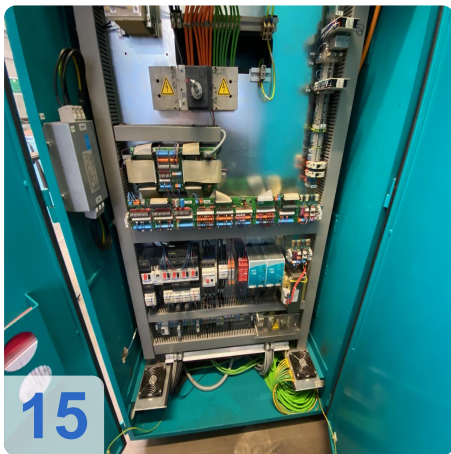




As

e

ssets





As

e

assets

18

TYP	DMR GENN. ABL.	SERIE NR.	81 DMR
Maßstab	21178	Stamm Nr.	647264
Bezeichnung	2000	Abweich. Wert	
Spannung	1000V		
STROMART / KIND OF CURRENT	3L + PE	0000 Hz	
BETRIESSPANNUNG / WORKING VOLTAGE	0 x 480 VAC		
STEUERSPANNUNG / CONTROL VOLTAGE	200-240VAC; 24 VDC		
LEISTUNG / RATING	450VA	7.37kW	
NENNSTROM / RATED CURRENT	16A	30 A	
STROMLAUFPLAN / CIRCUIT DIAGRAM	NR.	00019-011V 00019-020V	





# Asset-Trade

Assessment & Sale of Used Assets

Video:





# Asset-Trade

Assessment & Sale of Used Assets

QR Code for <https://www.asset-trade.de/en/print/pdf/node/7742>

**Asset-Trade**

**Assessment and Sale of Used Assets world  
wide**

**Am Sonnenhof 16**

**47800 Krefeld**

**Germany**

**Tel.: +49 2151 32500 33**